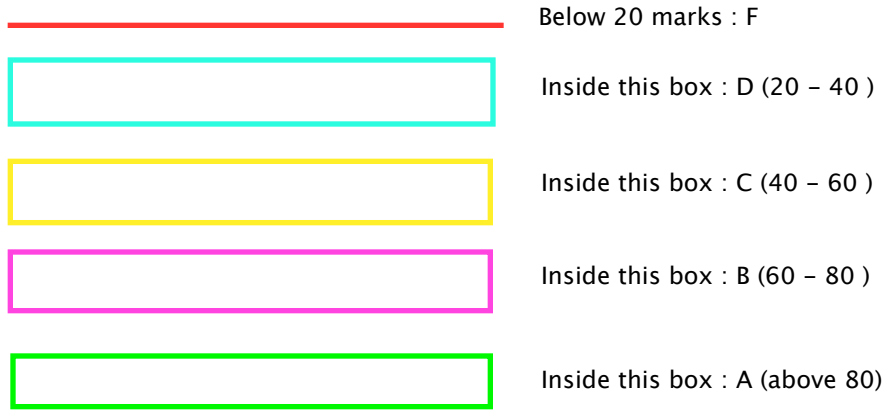
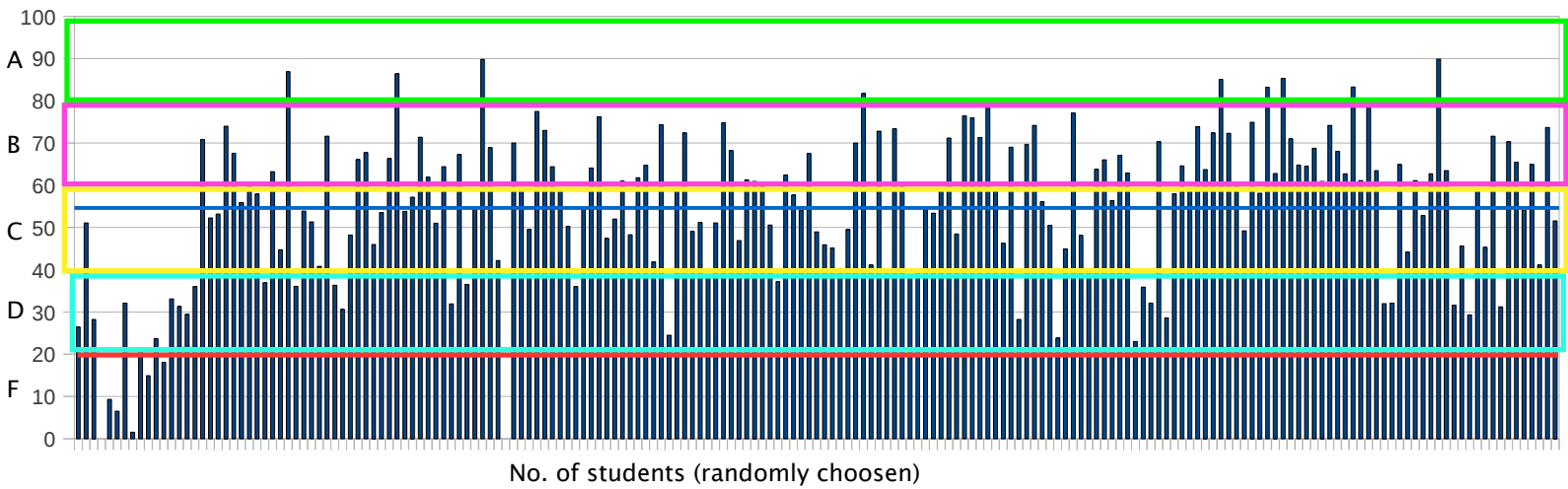


Final Marks obtained in PHY 102



$$\begin{aligned} \text{Final Marks out of hundred} &= \text{Quiz 1} + (\text{Mid-sem}) * (2/5) + (\text{Quiz 2})/2 + (\text{Final-Sem})*(3/10) \\ 100 &= 20 + 40 + 10 + 30 \end{aligned}$$



The blue line is the class average - 54.64